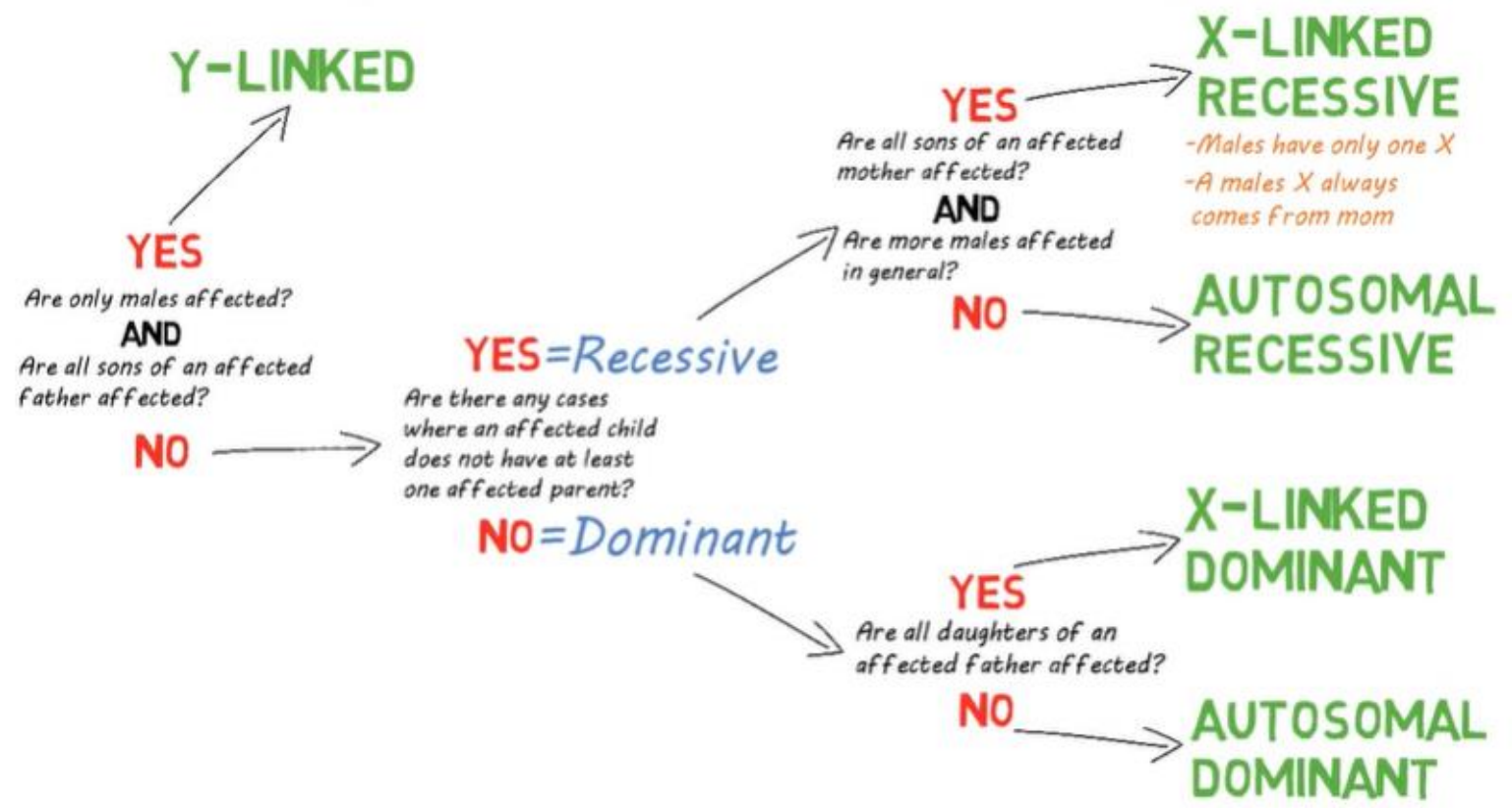
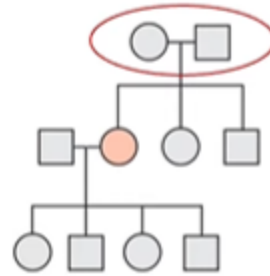


# Family pedigree approach

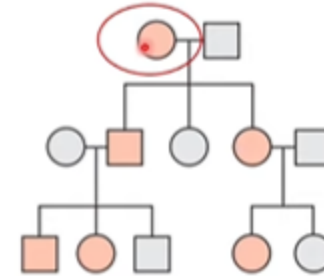
**Mohammad Hassan Al-thnaibat MD**



1- Are the parents affected ?



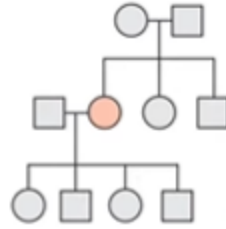
Recessive



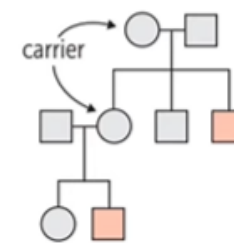
Dominant

2- Are male or female affected ?

Autosomal recessive

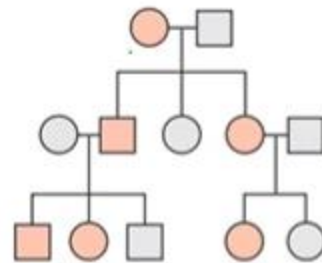


X-linked recessive

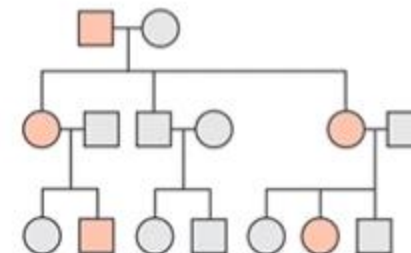


3- Is there male to male transmission ?

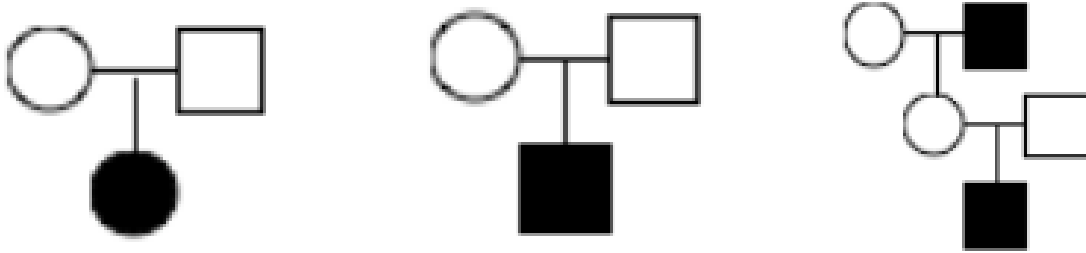
Autosomal dominant



X-linked dominant



## Patterns that Indicate a RECESSIVE Trait



## Patterns that Indicate a DOMINANT Trait

