



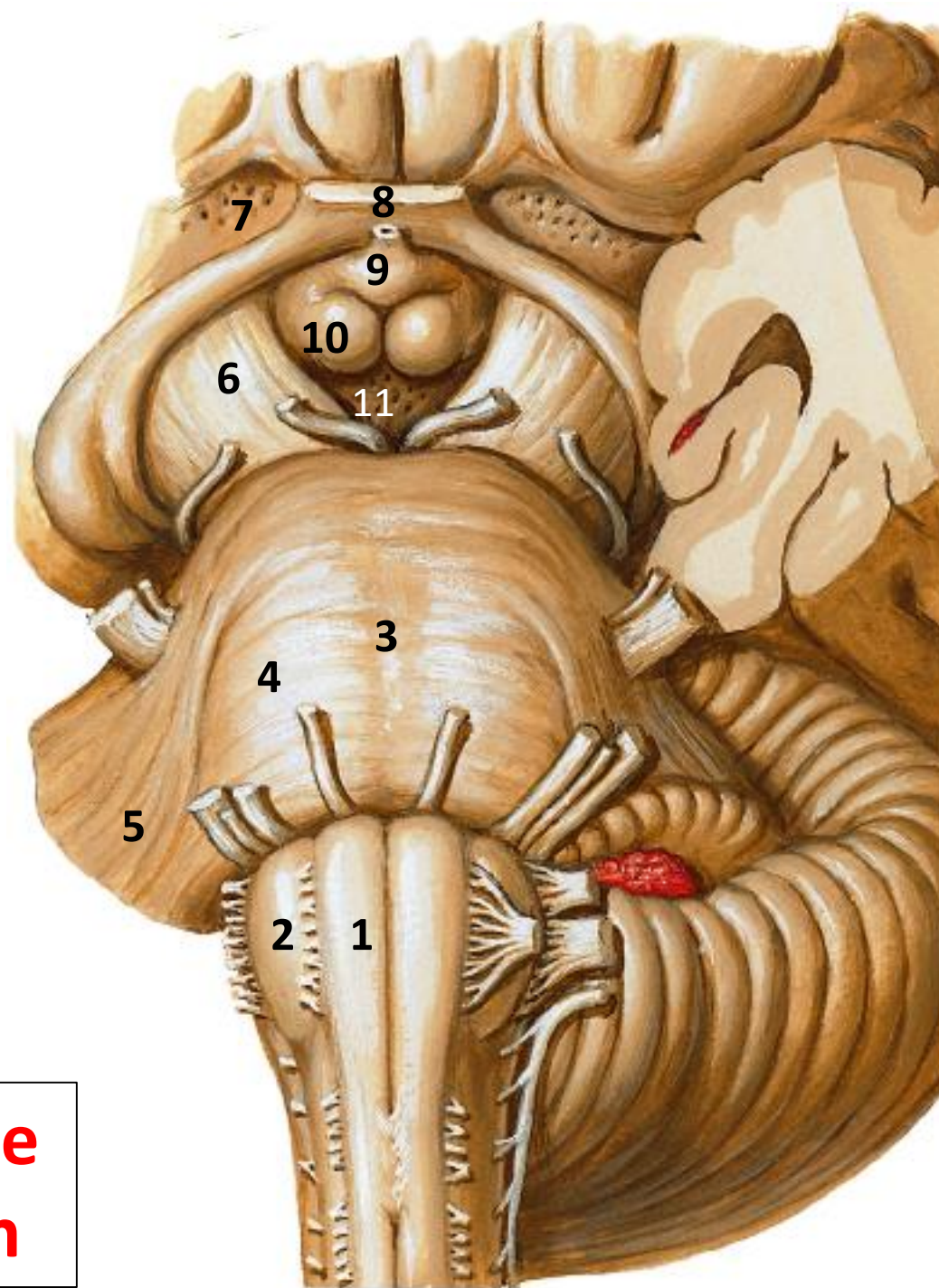
# Central Nervous System

## Practical Figures

**Dr. Ashraf Ramzy**  
**Professor of Anatomy & Embryology**  
[ash-ramzy@hotmail.com](mailto:ash-ramzy@hotmail.com)

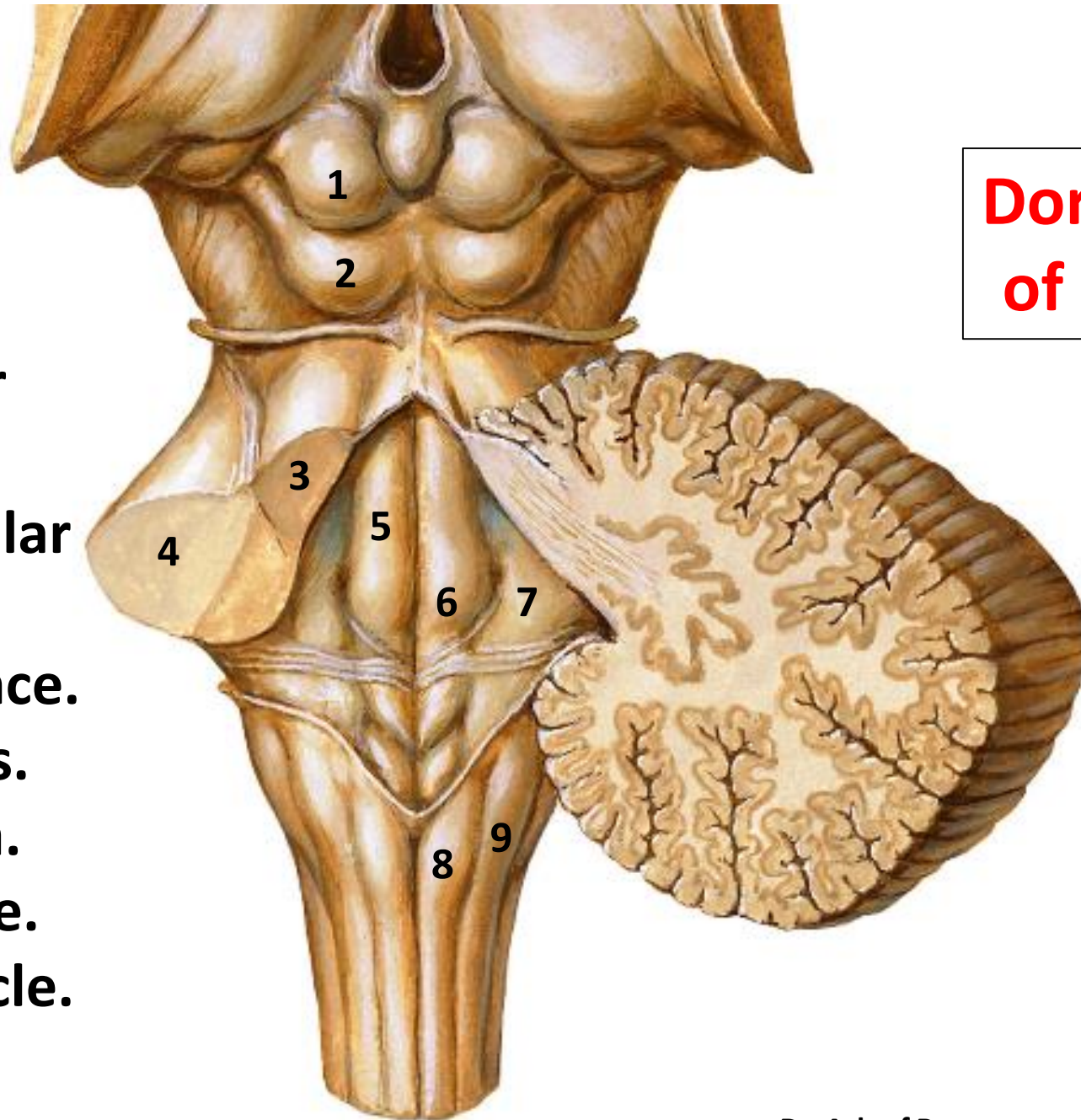
1. Pyramid.
2. Olive.
3. Groove for basilar artery.
4. Basis pontis.
5. Middle cerebellar peduncle.
6. Cerebral peduncle (crus cerebri).

**Ventral Surface  
of Brain Stem**



7. Ant. Perforated substance.
8. Optic chiasma.
9. Tuber cinereum.
10. Mammillary body.
11. Post. Perforated substance.

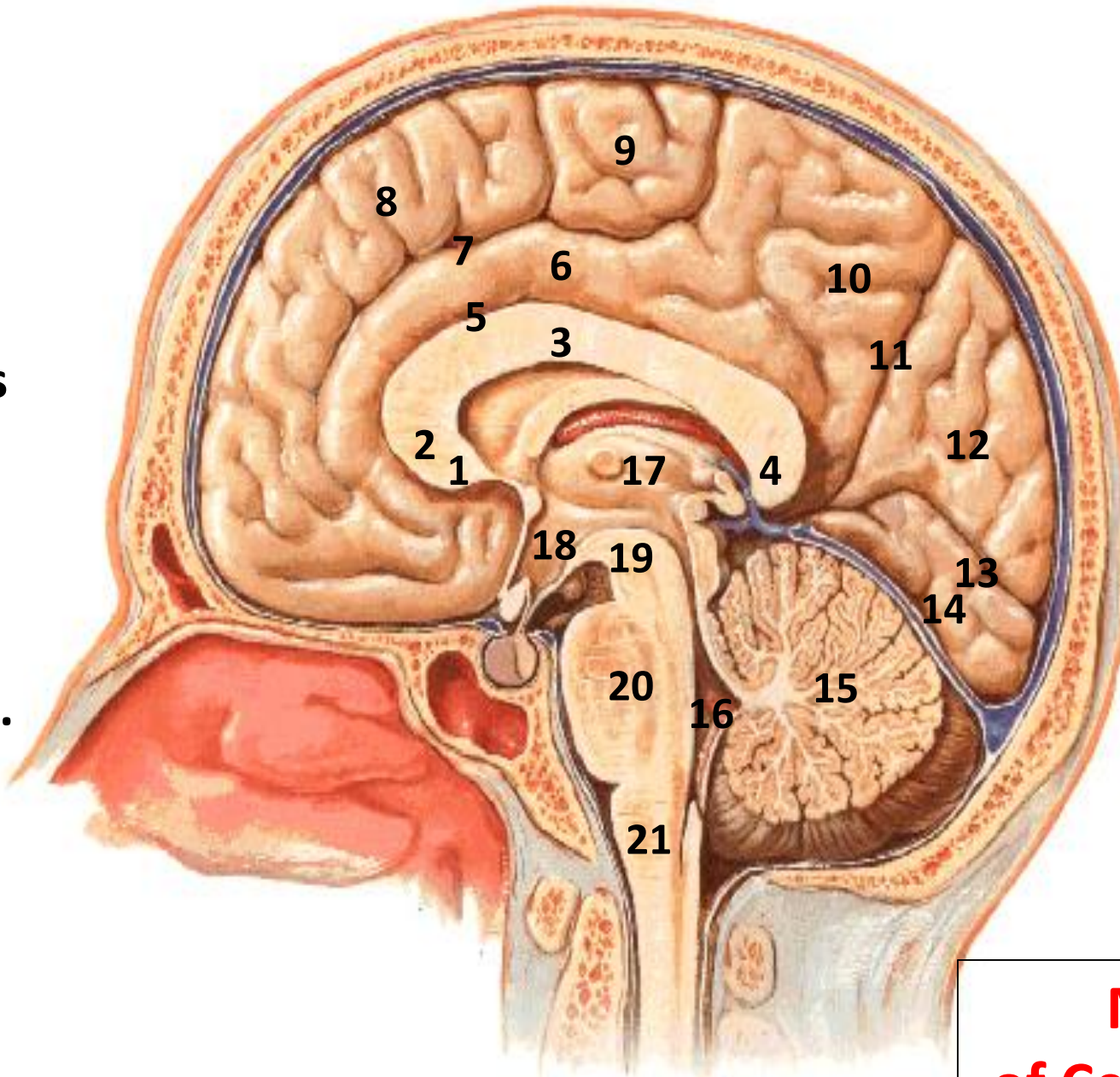
1. Sup. Colliculus
2. Inf. Colliculus
3. Sup. Cerebellar peduncle.
4. Middle cerebellar peduncle.
5. Medial eminence.
6. Facial colliculus.
7. Vestibular area.
8. Gracile tubercle.
9. Cuneate tubercle.



## Dorsal Surface of Brain Stem



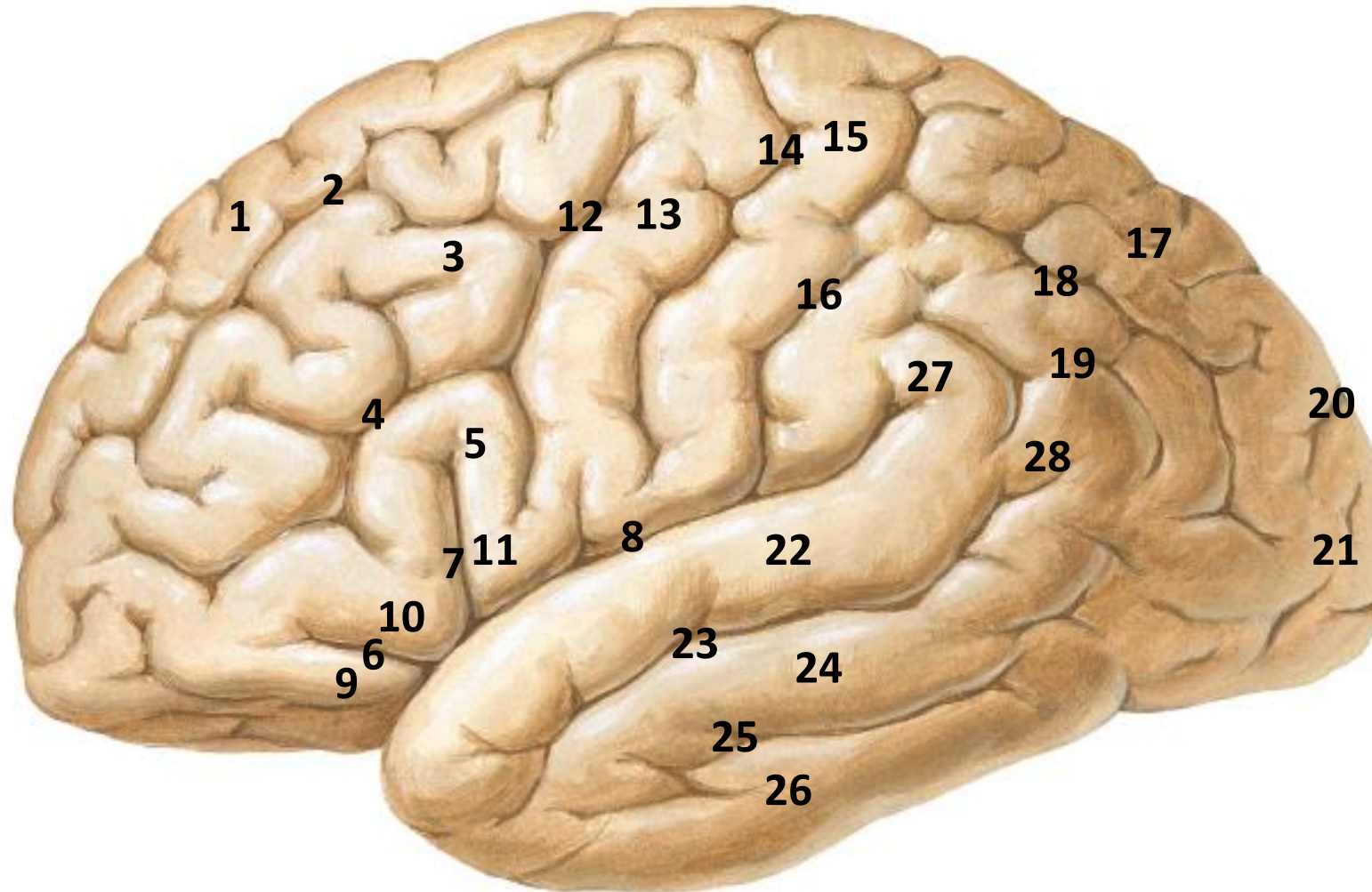
1. Rostrum of corpus callosum.
2. Genu of corpus callosum.
3. Body of corpus callosum.
4. Splenium of corpus callosum.
5. Callosal sulcus.
6. Cingulate gyrus.
7. Cingulate sulcus.
8. Med. Frontal gyrus.
9. Paracentral lobule.
10. Precuneus.
11. Parieto-occipital sulcus.
12. Cuneus.



13. Calcarine sulcus.
14. Lingual gyrus.
15. Cerebellum.
16. 4<sup>th</sup> Ventricle.
17. Thalamus.
18. Hypothalamus.
19. Midbrain.
20. Pons.
21. Medulla oblongata.

**Medial Surface  
of Cerebral Hemisphere**

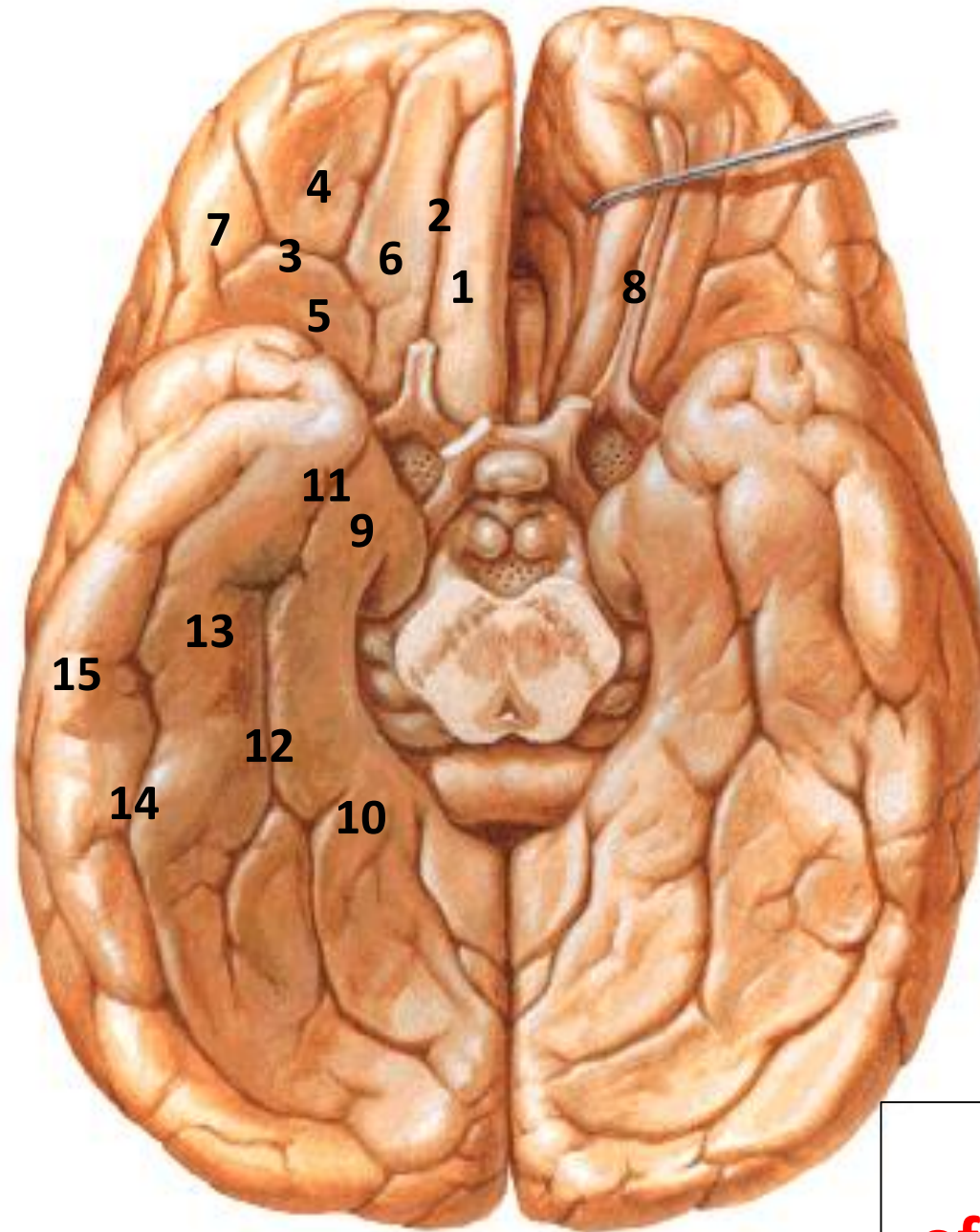
1. Sup. Frontal gyrus.
2. Sup. Frontal sulcus.
3. Middle frontal gyrus.
4. Inf. Frontal sulcus.
5. Inf. Frontal gyrus.
6. Ant. Ramus of lat. Sulcus.
7. Ascending ramus of lat. S.
8. Post. Ramus of lat. Sulcus.
9. Pars orbitalis.
10. Pars triangularis.
11. Pars opercularis.
12. Precentral sulcus.
13. Precentral gyrus.
14. Central sulcus.



15. Postcentral G.
16. Postcentral S.
17. Sup. Parietal lobule.
18. Intraparietal S.
19. Inf. Parietal lobule.
20. Parieto-occipital S.
21. Occipital lobe.
22. Sup. Temporal G.
23. Sup. Temporal S.
24. Middle temporal G.
25. Inf. Temporal S.
26. Inf. Temporal G.
27. Supramarginal G.
28. Angular G.



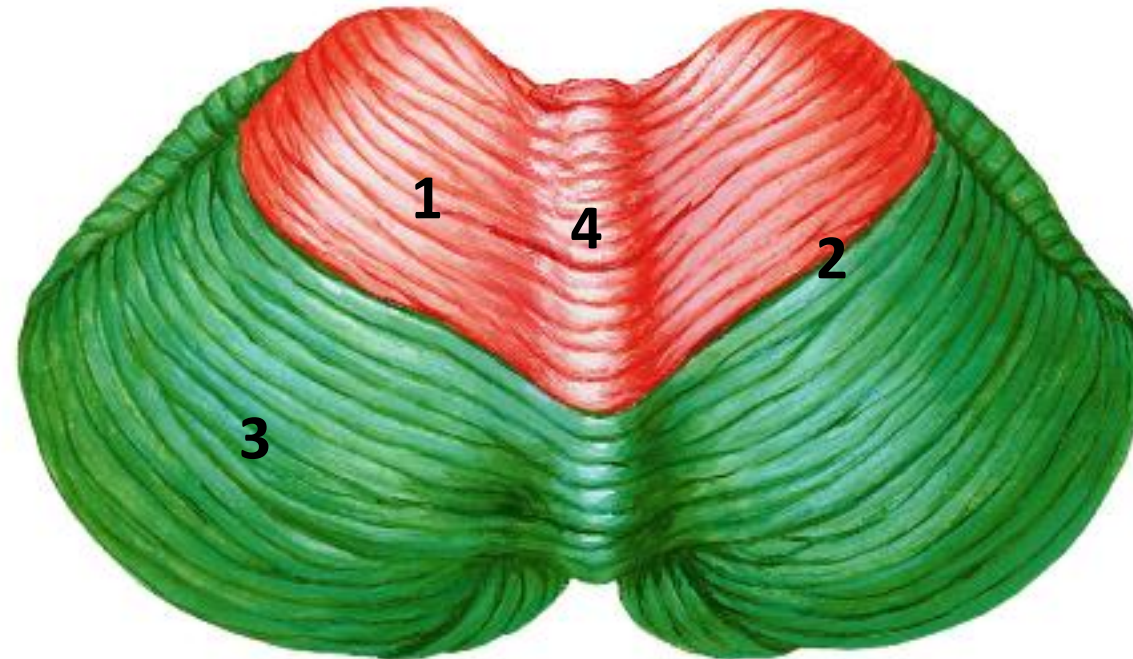
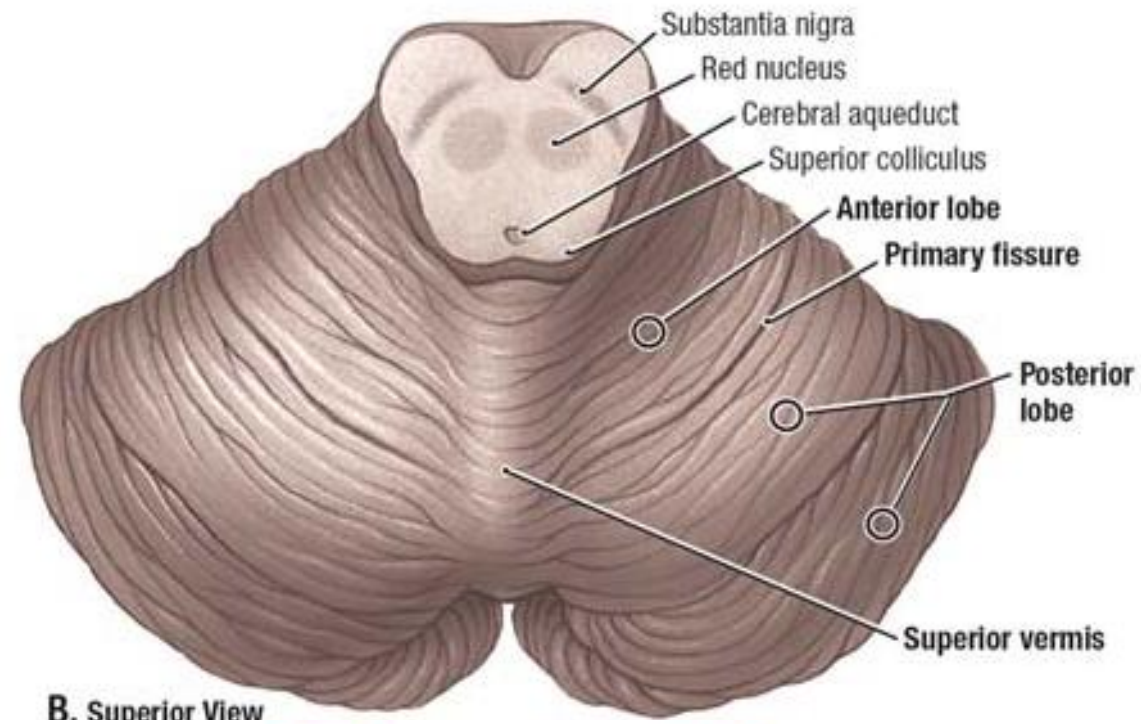
1. Gyrus rectus.
2. Olfactory S.
3. H-shaped orbital S.
4. Ant. Orbital G.
5. Post. Orbital G.
6. Medial orbital G.
7. Lat. Orbital G.
8. Olfactory bulb & tract.
9. Uncus.
10. Parahippocampal G.



11. Rhinal S.
12. Collateral S.
13. Med. Occipito-temporal G.
14. Occipito-temporal S.
15. lat. Occipito-temporal G.

**Inferior Surface  
of Cerebral Hemisphere**

1. Ant. Lobe of cerebellum.
2. Primary fissure of cerebellum.
3. Post. Lobe of cerebellum.
4. Sup. Vermis of cerebellum.

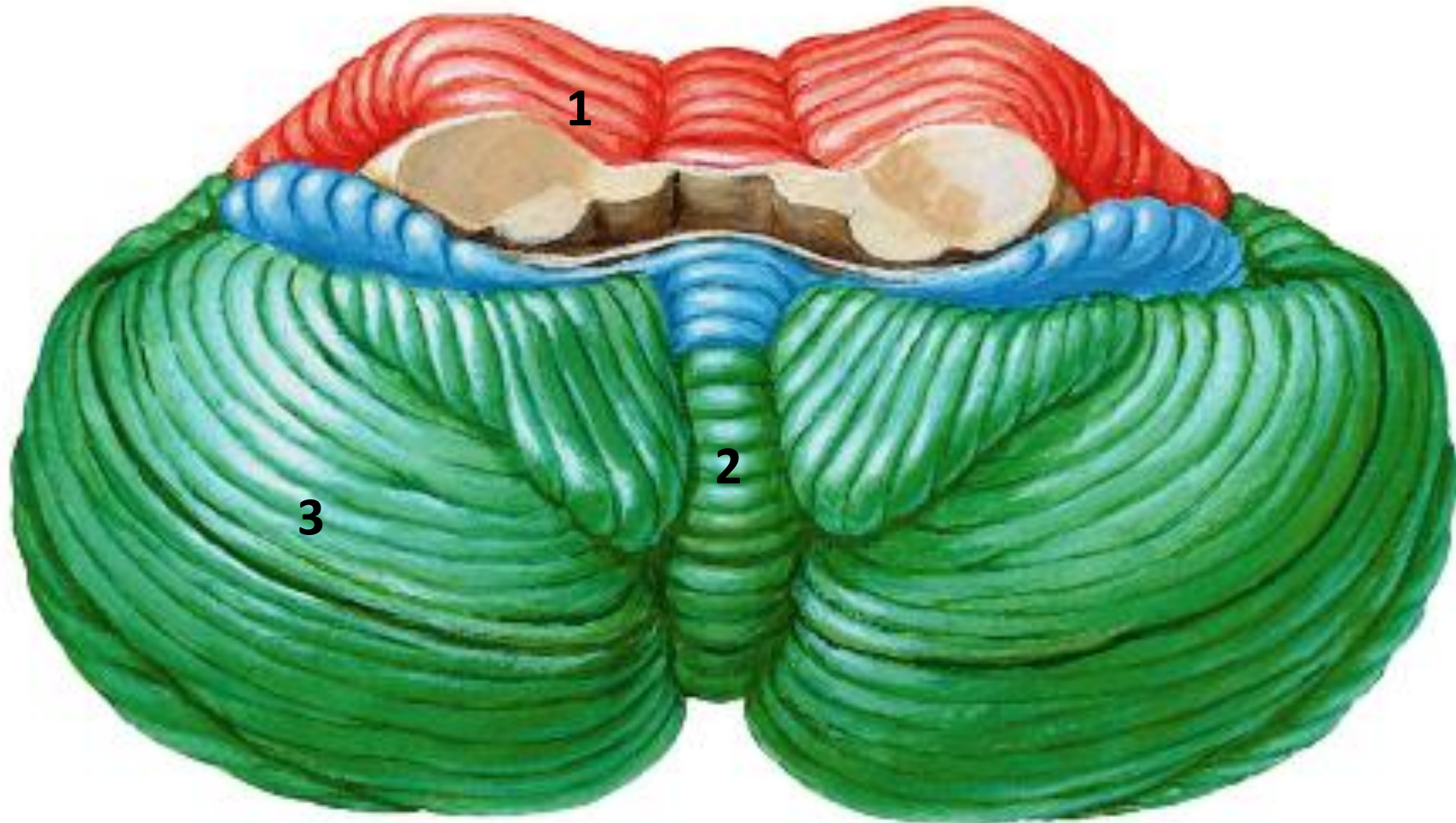


**Superior Surface  
of Cerebellum**



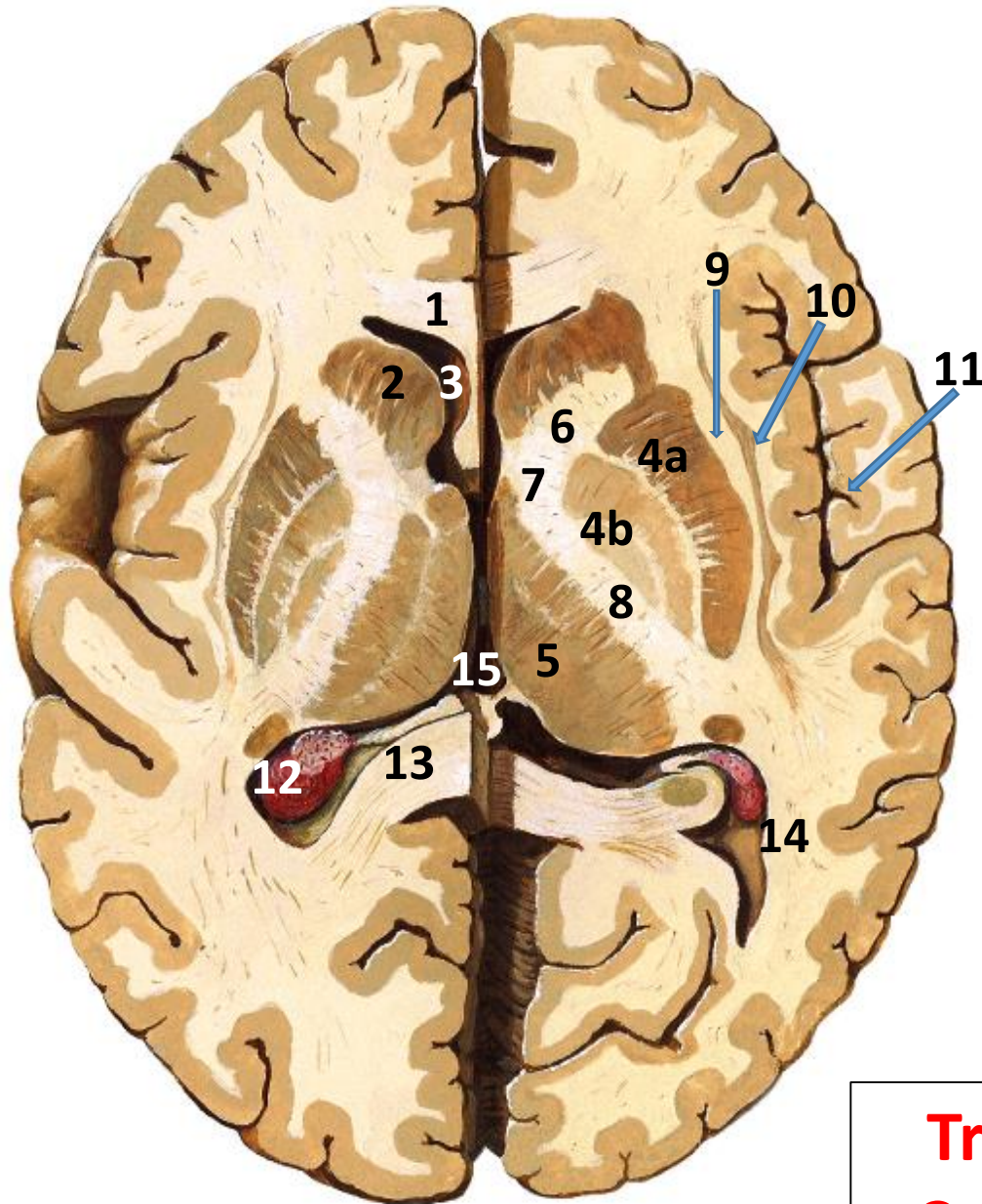
1. Ant. Lobe of cerebellum.
2. Inf. Vermis of cerebellum.
3. Post. Lobe of cerebellum.

**Inferior Surface  
of Cerebellum**





1. Forceps minor (genu of corpus callosum).
2. Head of caudate nucleus.
3. Ant. horn of lat. ventricle.
4. Lentiform nucleus:
  - 4a. Putamen.
  - 4b. Globus pallidus.
5. Thalamus.
6. Ant. limb of internal capsule.
7. Genu of internal capsule.
8. Post. limb of internal capsule.



9. External capsule.
10. Claustrum.
11. Insula.
12. Post. horn of lat. ventricle.
13. Forceps major (splenium of corpus callosum).
14. Tapetum, optic radiation & inf. longitudinal bundle (TOI).
15. Third ventricle.

**Transverse Section of  
Cerebral Hemispheres**