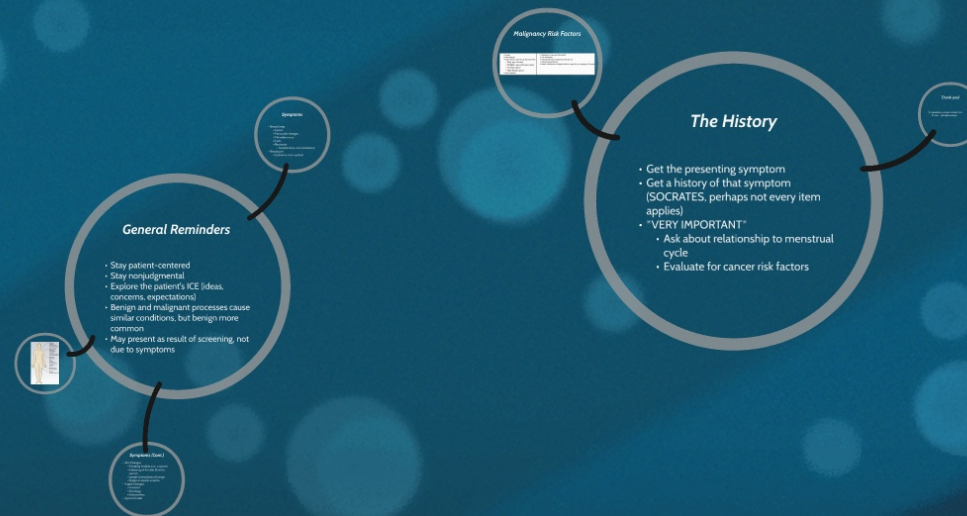




Genitourinary History - Breast



General Reminders

- Stay patient-centered
- Stay nonjudgmental
- Explore the patient's ICE (ideas, concerns, expectations)
- Benign and malignant processes cause similar conditions, but benign more common
- May present as result of screening, not due to symptoms

Symptoms

- Breast lump
- Cancer
- Fibrocystic changes
- Fibroadenomas
- Cysts
- Abscesses
- Involuntary vs non-lactational

Breast pain

- Cyclical vs non-cyclical



Symptoms (Cont.)

- Skin Changes
- Discoloration (redness or cancer)
- Itching of the skin (lead to cancer)
- Lymphedema/peau d'orange
- Nipple or areolar eczema
- Nipple Changes
- Inversion
- Discharge
- Galactorrhea
- Symmastia

General Reminders

- Stay patient-centered
- Stay nonjudgmental
- Explore the patient's ICE (ideas, concerns, expectations)
- Benign and malignant processes cause similar conditions, but benign more common
- May present as result of screening, not due to symptoms

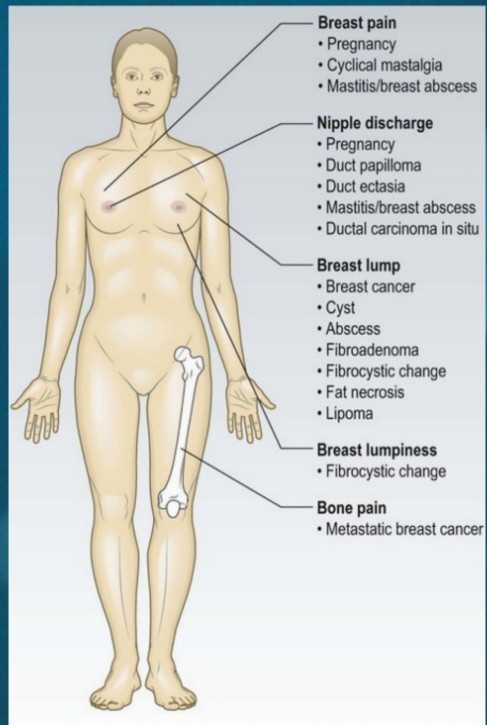


Symptoms

- Breast lump
 - Cancer
 - Fibrocystic changes
 - Fibroadenomas
 - Cysts
 - Abscesses
 - lactational vs. non-lactational
- Breast pain
 - Cyclical vs. non-cyclical

Symptoms (Cont.)

- Skin Changes
 - Dimpling (mobile over a cancer)
 - Indrawing of the skin (fixed to cancer)
 - Lymphedema/peau d'orange
 - Nipple or areolar eczema
- Nipple Changes
 - Inversion
 - Discharge
 - Galactorrhea
- Gynecomastia



Malignancy Risk Factors

| | |
|---------------------------------------|--|
| • Age | • Family history of cancer |
| • Menstrual age | • Endometriosis |
| • Family history of colorectal cancer | • Endometriosis associated with ovarian cancer |
| • Family history of breast cancer | • Endometriosis associated with uterine cancer |
| • Endometriosis | • Endometriosis associated with ovarian cancer |
| • Multiple pregnancies | • Endometriosis associated with uterine cancer |
| • Multiple pregnancies | • Endometriosis associated with uterine cancer |

The History

- Get the presenting symptom
- Get a history of that symptom (SOCRATES, perhaps not every item applies)
- ***VERY IMPORTANT***
 - Ask about relationship to menstrual cycle
 - Evaluate for cancer risk factors

Thank you!

For questions please contact me
E-mail: psw@tu.nl

- Onset
- Increasing age
- Family history, especially if associated with:
 - Early age of onset
 - Multiple cases of breast cancer
 - Ovarian cancer
 - Male breast cancer
 - Early menarche
- Full parity or late age of first birth
- Late menopause
- History of hormone replacement therapy use
- Postmenopausal obesity
- Menstrual irregularities, especially at young age (<30 years)

The History

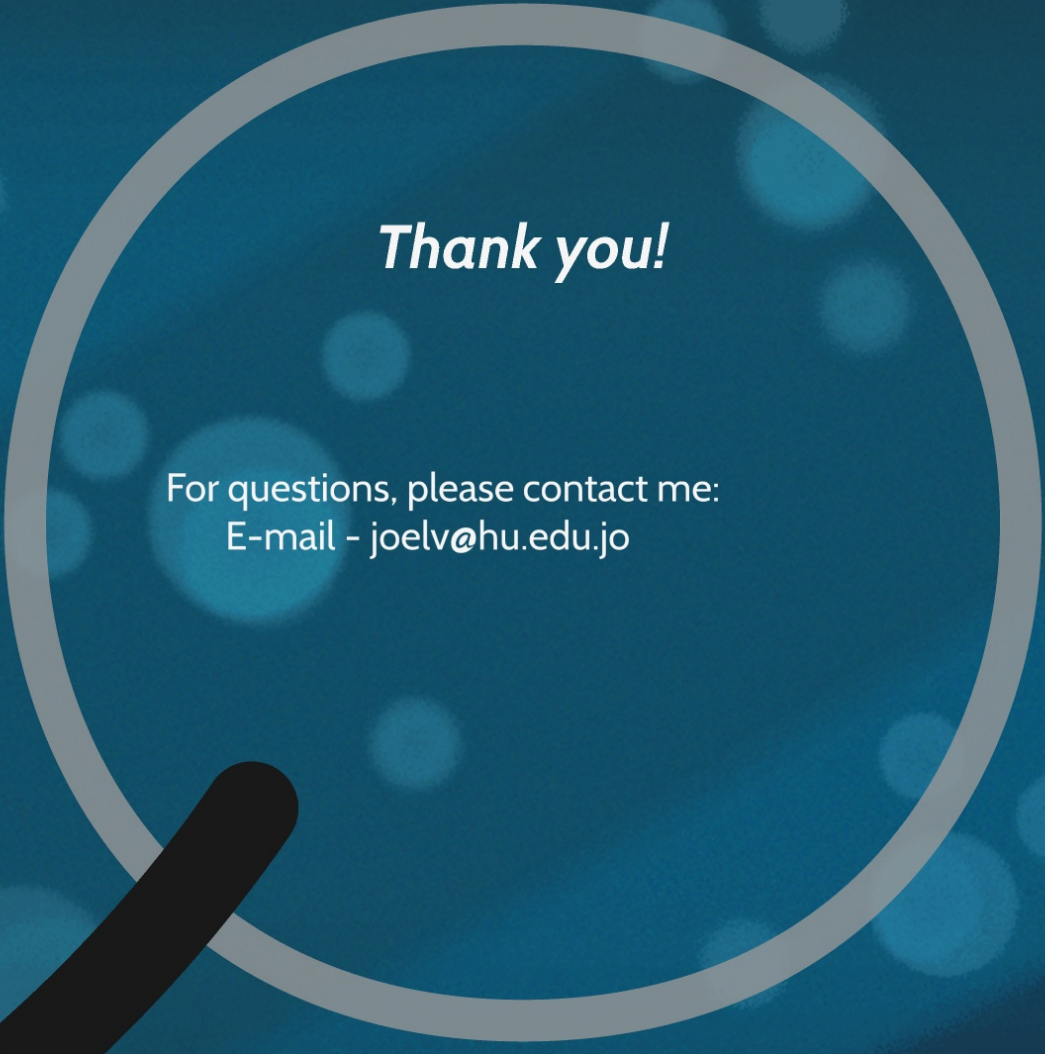
- Get the presenting symptom
- Get a history of that symptom (SOCRATES, perhaps not every item applies)
- ***VERY IMPORTANT***
 - Ask about relationship to menstrual cycle
 - Evaluate for cancer risk factors

Thank you!

For questions, please contact me:
E-mail - peel@hu.edu.jp

Malignancy Risk Factors

- | | |
|---|---|
| <ul style="list-style-type: none">• Female• Increasing age• Family history, especially if associated with:<ul style="list-style-type: none">• Early age of onset• Multiple cases of breast cancer• Ovarian cancer• Male breast cancer• Early menarche | <ul style="list-style-type: none">• Nulliparity or late age of first child• Late menopause• Prolonged hormone replacement therapy use• Postmenopausal obesity• Mantle irradiation for Hodgkin's disease, especially at young age (<30 years) |
|---|---|



Thank you!

For questions, please contact me:
E-mail - joelv@hu.edu.jo



Genitourinary History - Breast

