



Cervical Plexus.

Dr Ashraf Sadek *PhD, MD, MRCPCH*

Assistant Professor of anatomy and embryology

objects

- 1-Make a list of contributing roots.
- 2-Discuss the general arrangement.
- 3-Describe the location of this plexus.
- 4-Make a list of the out coming nerves.
- 5-Follow the branches to their target organs.
- 6-Point out the point where the major cutaneous nerves emerge.
- 7-Make a list of the cutaneous nerve.
- 8-Follow the cutaneous branches to their destinations.

Cervical Plexus:

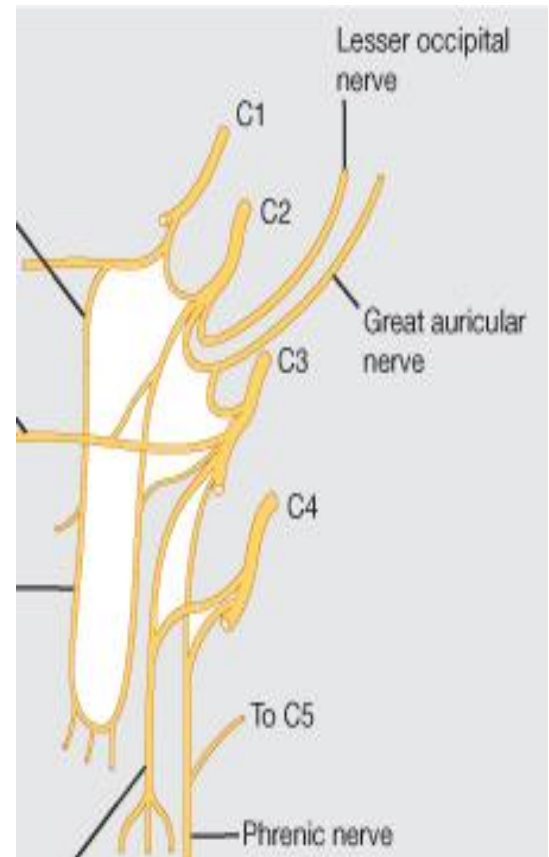
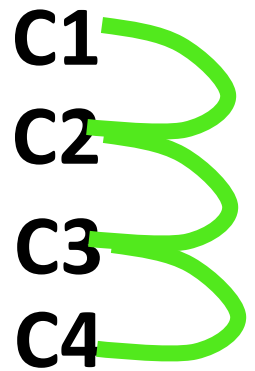
Is formed by ventral rami of upper four cervical nerves.

The rami are joined together to make

3 loops that lie between

Scalenous medius anteriorly &
Prevertebral fascia posteriorly.

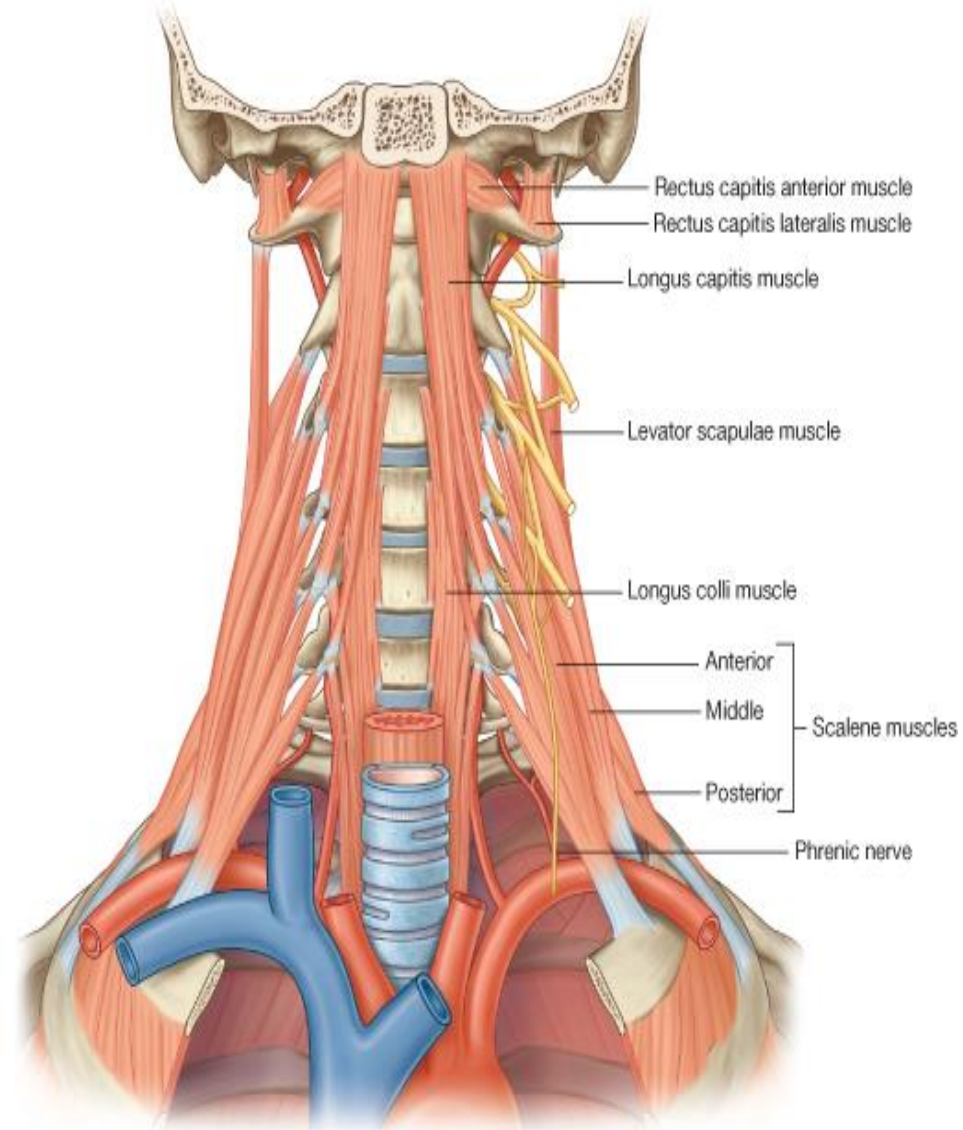
- It supplies skin & muscles of the head & neck.



Branches of cervical Plexus:

A) Cutaneous branches

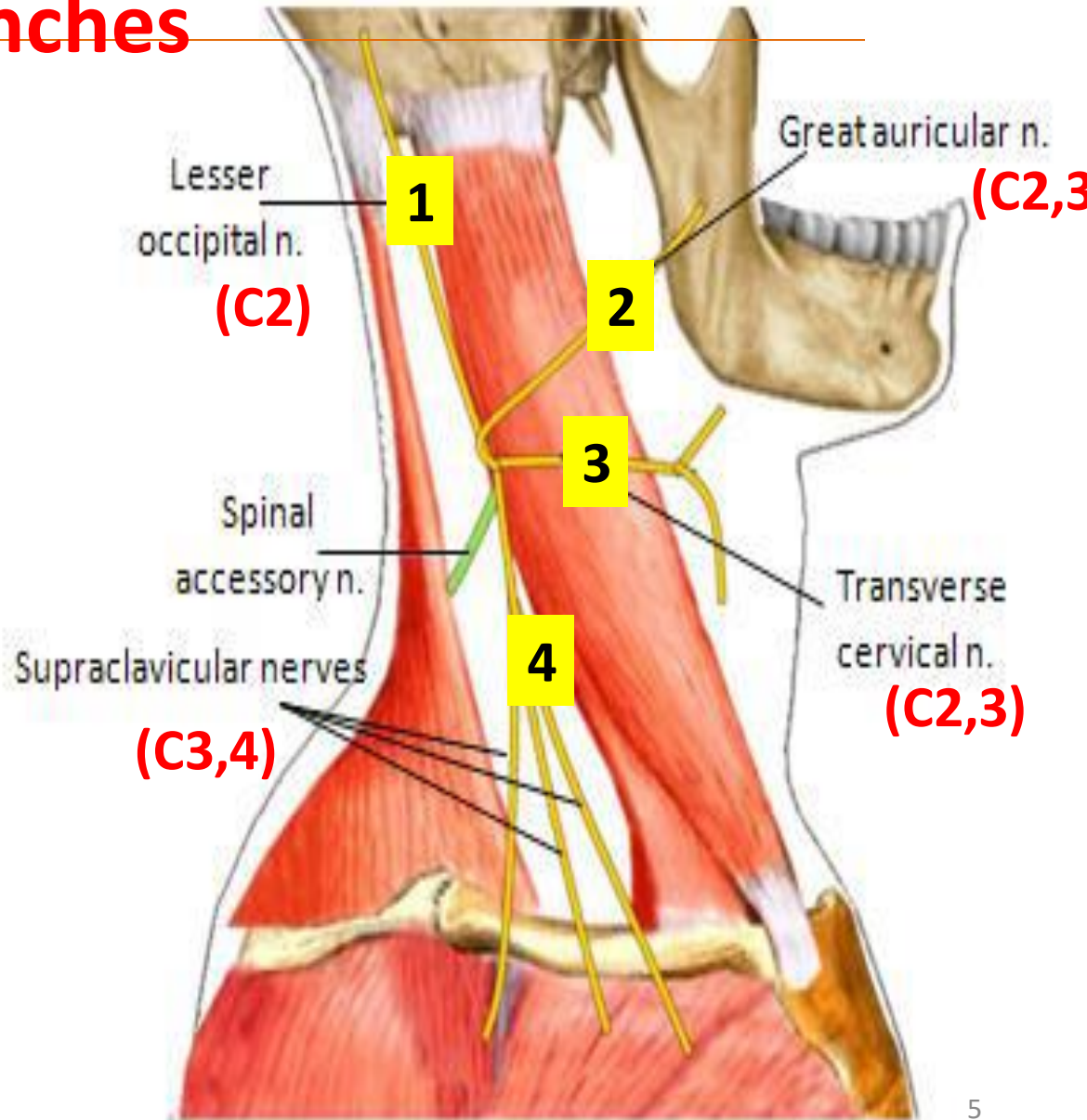
B) Muscular branches



Branches of cervical Plexus:

A) Cutaneous branches

appear at
middle of
posterior
border of
sternomastoid
muscle
then radiate
in different
directions



Branches of cervical Plexus

B) Muscular branches

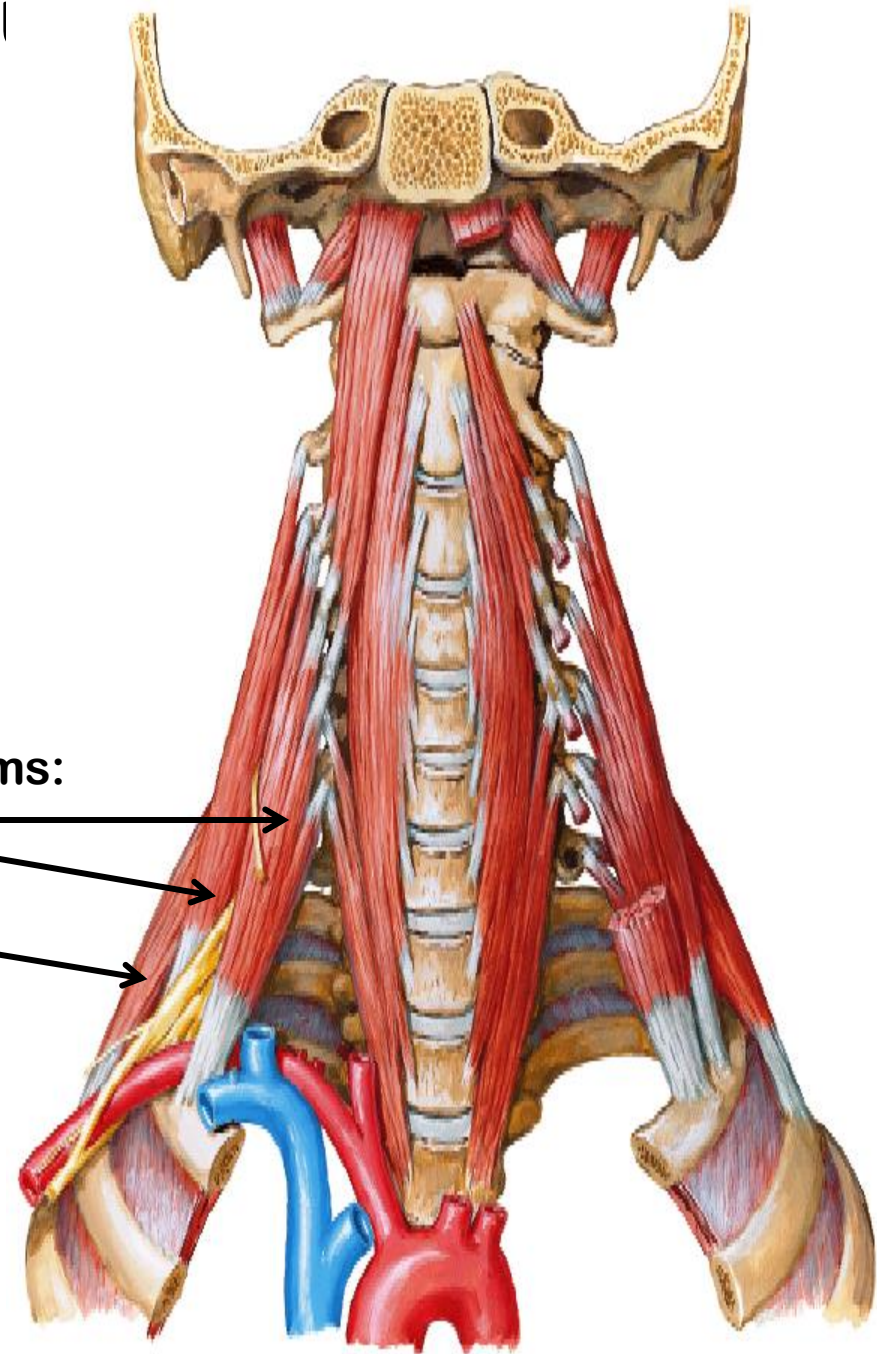
1) Pre-vertebral muscles & Scalenei

Scalene ms:

Anterior

Middle

Posterior

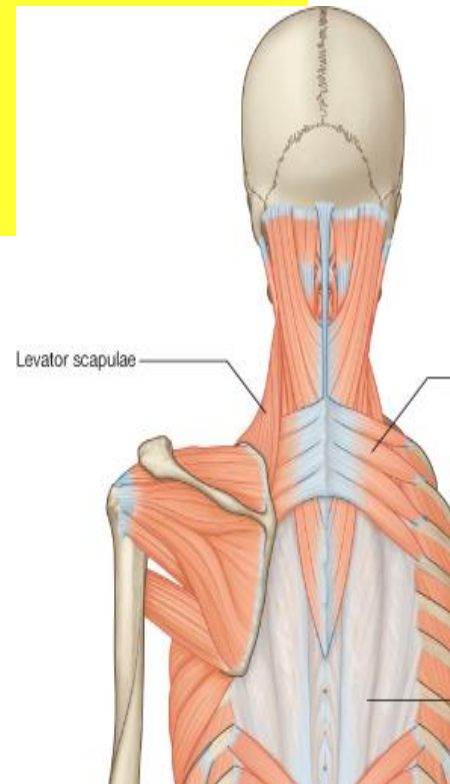
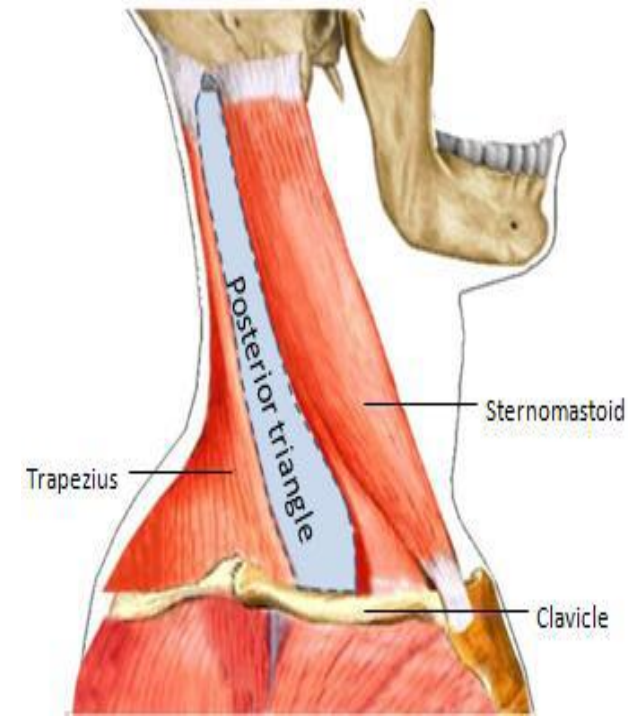


Branches of cervical Plexus:

B) Muscular branches

2) Sternomastoid & Trapezius (*sensory fibers*)

3) Levator scapulae

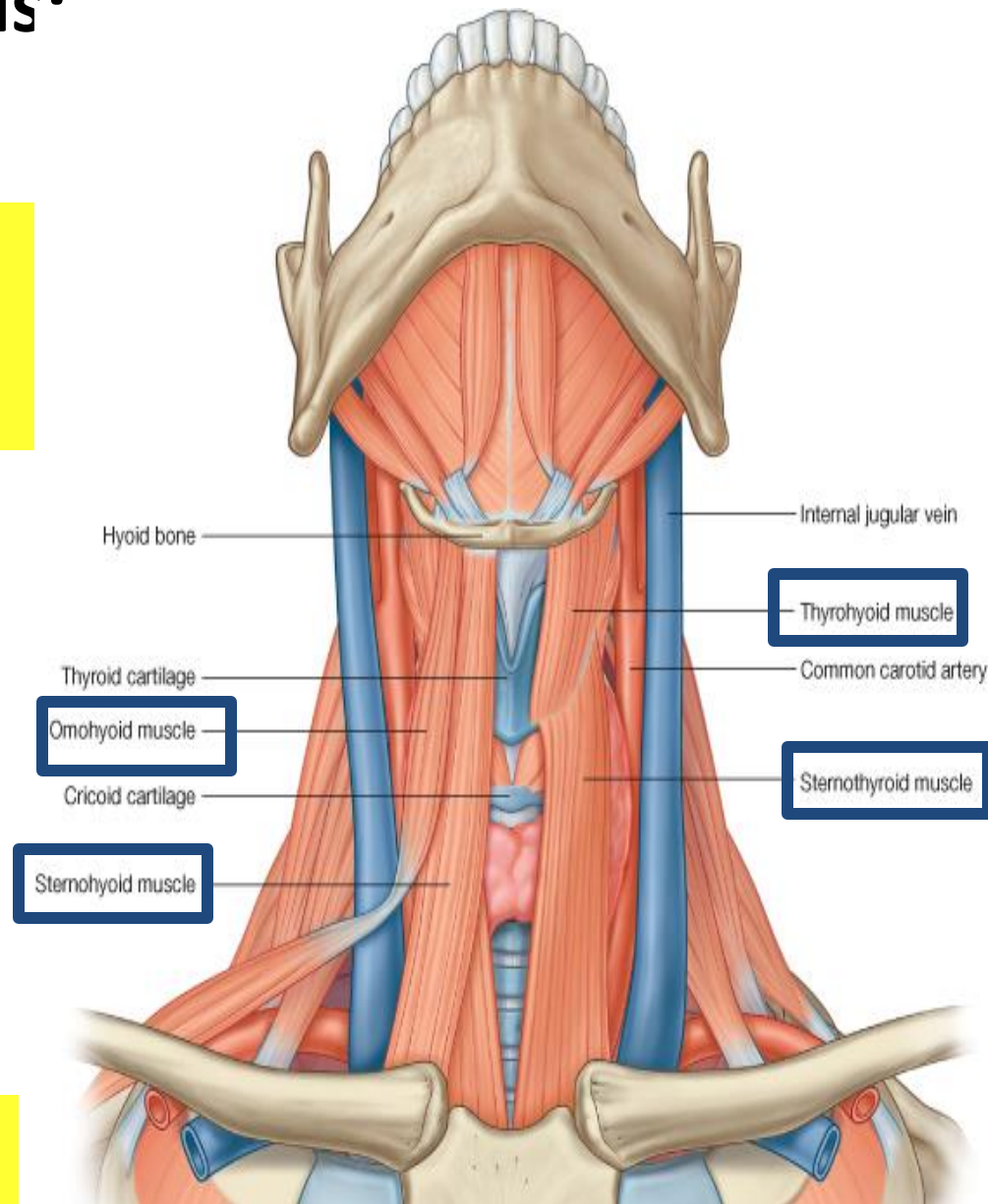


Branches of cervical Plexus•

2) Muscular branches

4) Infra hyoid muscles (*by ansa cervicalis*)

- Sternohyoid
- Sternothyroid
- Omohyoid
- Thyrohyoid
- **Geniohyoid**



5) Diaphragm

Ansa cervicalis supply:

- Sternohyoid
- Sternothyroid
- Omohyoid

Hypoglossal Nerve

C1

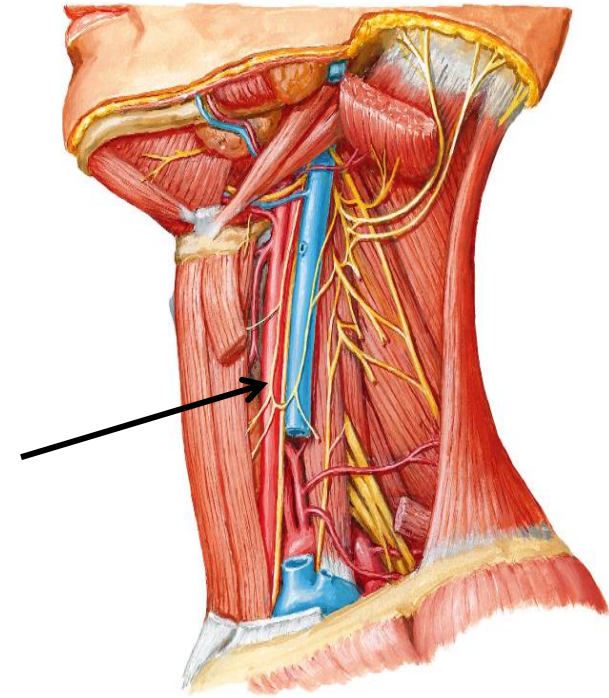
C2

C3

C4

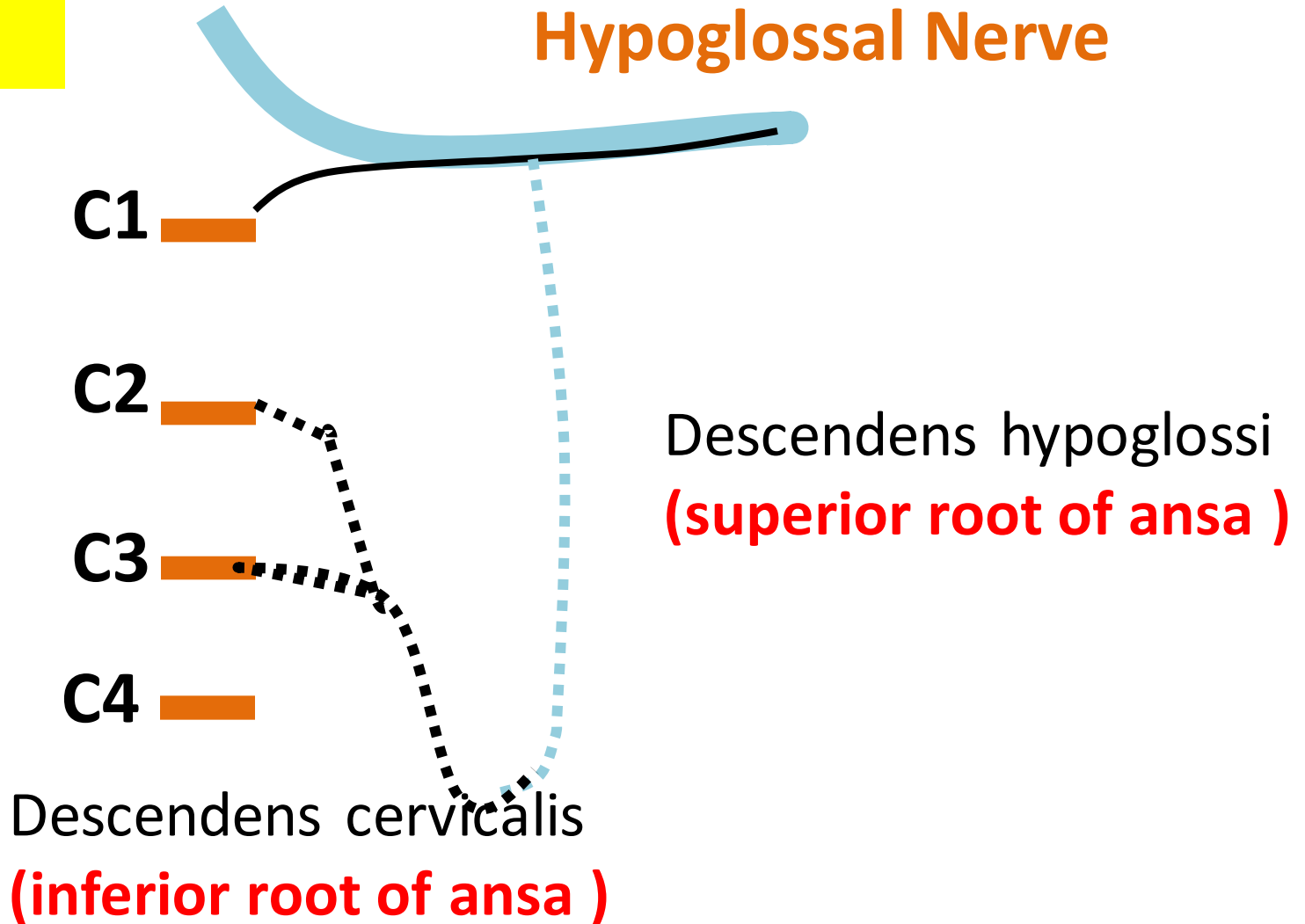
Descendens hypoglossi
(superior root of ansa)

Descendens cervicalis
(inferior root of ansa)



Other C1 fibers within hypoglossal nerve supply:

- Thyrohyoid
- Geniohyoid



Thank you