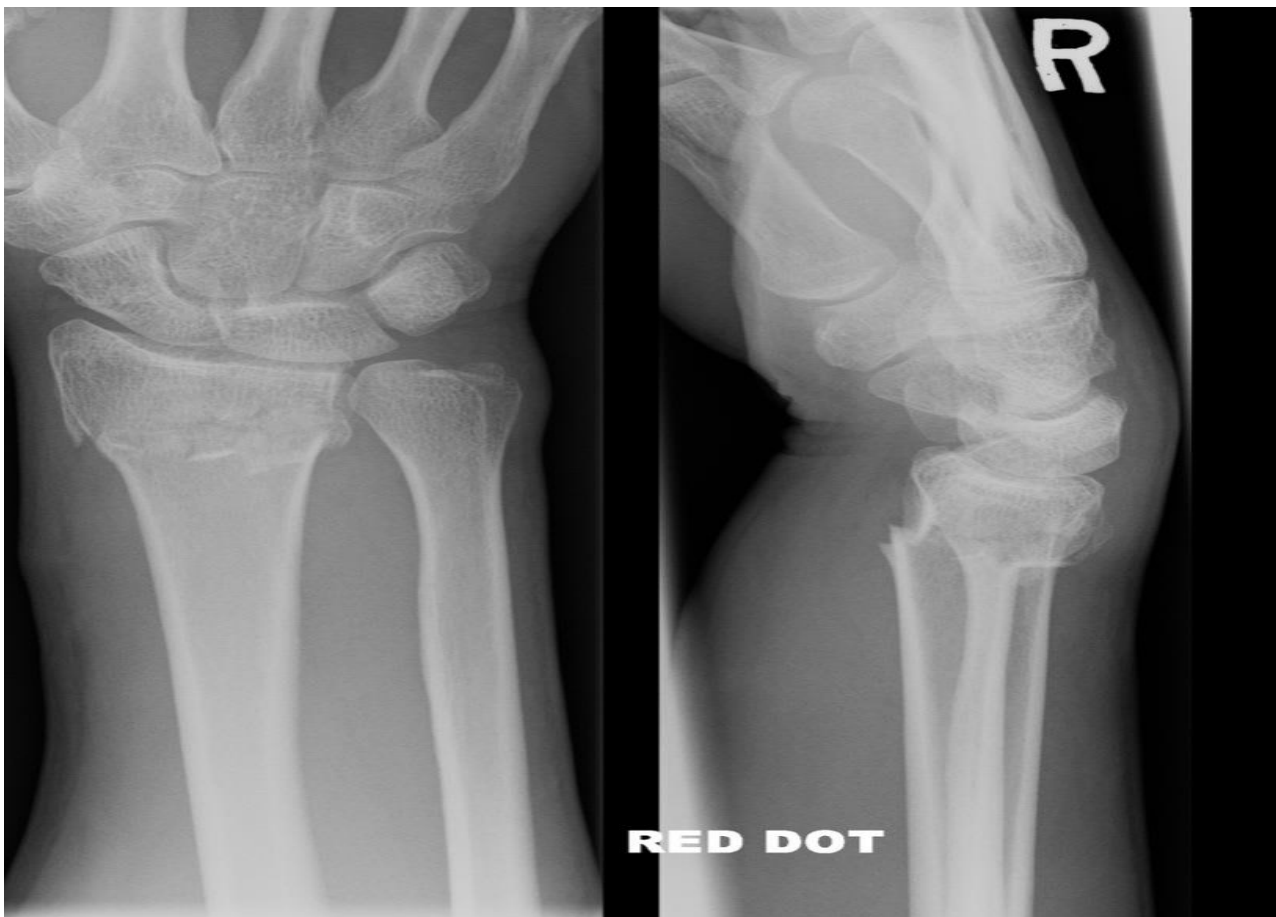




Bilateral Protrusion acetabuli



- What is the Fracture ?
Colles Fracture
- What Deformity does it cause ?
Dinner fork deformity



- What is the Fracture ?
Galeazzi fracture



- What is the Fracture ?
Monteggia fracture
- Treated/Managed by ORIF



- What is the Fracture ? Ulnar fracture
- Type ? Segmental
- Displacement ?
Translation + Angulation + shortening

Green-Stick Fracture In both Forearm Bones





- What is the fracture ?
Olecranon fracture

Posterior Elbow dislocation



Bicondylar fracture



12

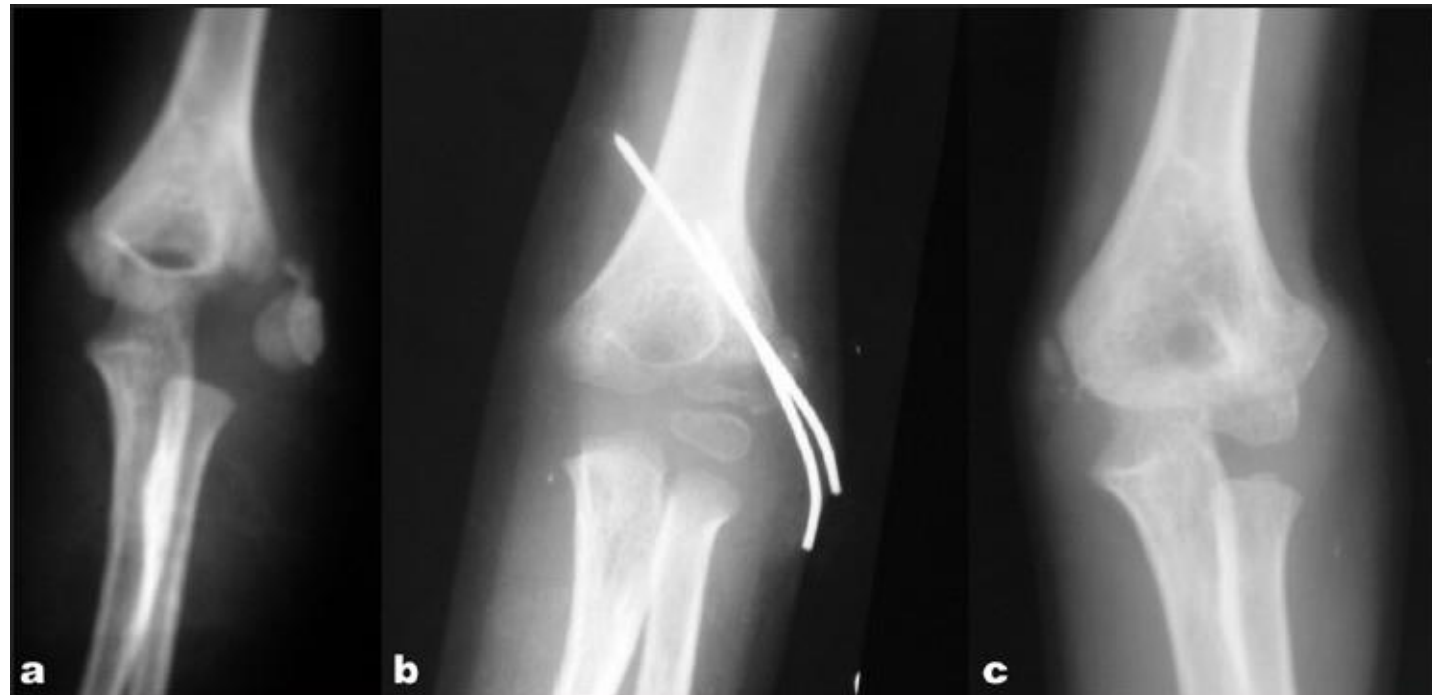


13

- What is this ?

Lateral condylar fracture of the elbow

Treated by Percutaneous Pinning
with K-Wires



Medial epicondylar fracture



- What is the Fracture ?
Supra-Condylar fracture
- Displacement > Posterior



- Humeral shaft Fracture
- Spiral
- Most com comp. is Radial nerve injury



- Hill-sach sign

a posterolateral humeral head compression fracture, typically secondary to recurrent anterior shoulder dislocations, as the humeral head comes to rest against the anteroinferior part of the glenoid. It is often associated with a Bankart lesion of the glenoid

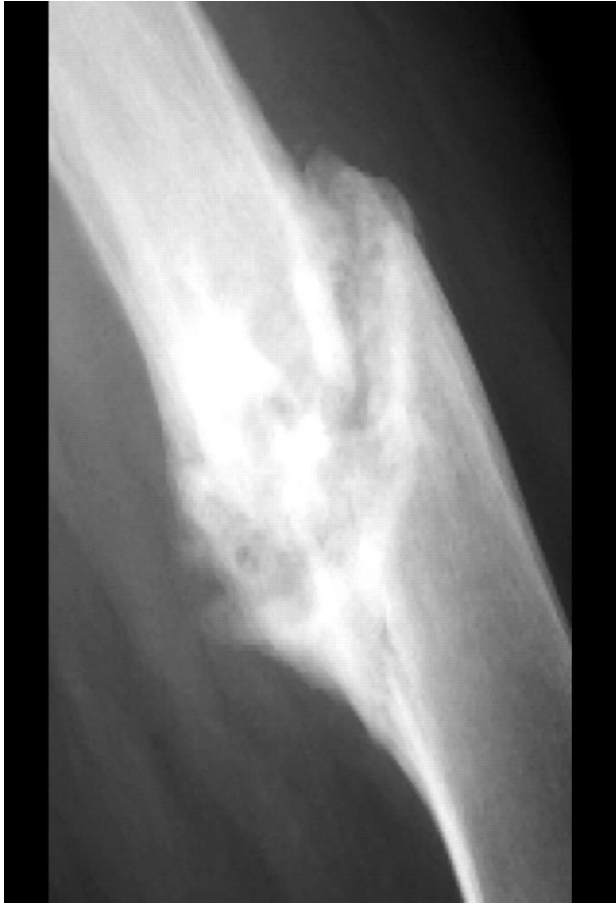
- Cause ? Recurrent dislocation



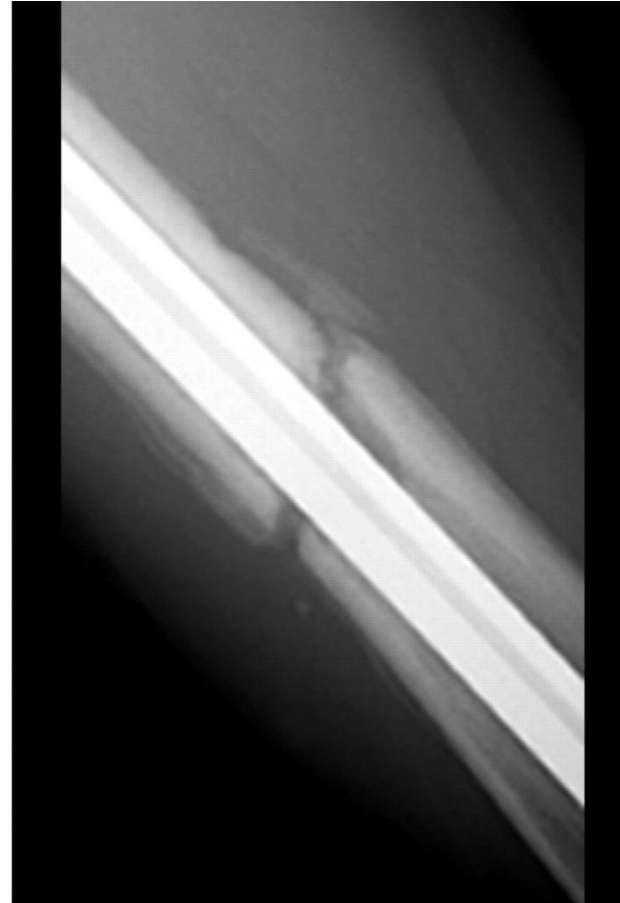
Anterior dislocation



Non Union Treated by a Nail



A



B

Describe displacement in a o b ?

- A : translation , shortening
- B : lengthening



(a)



(b)

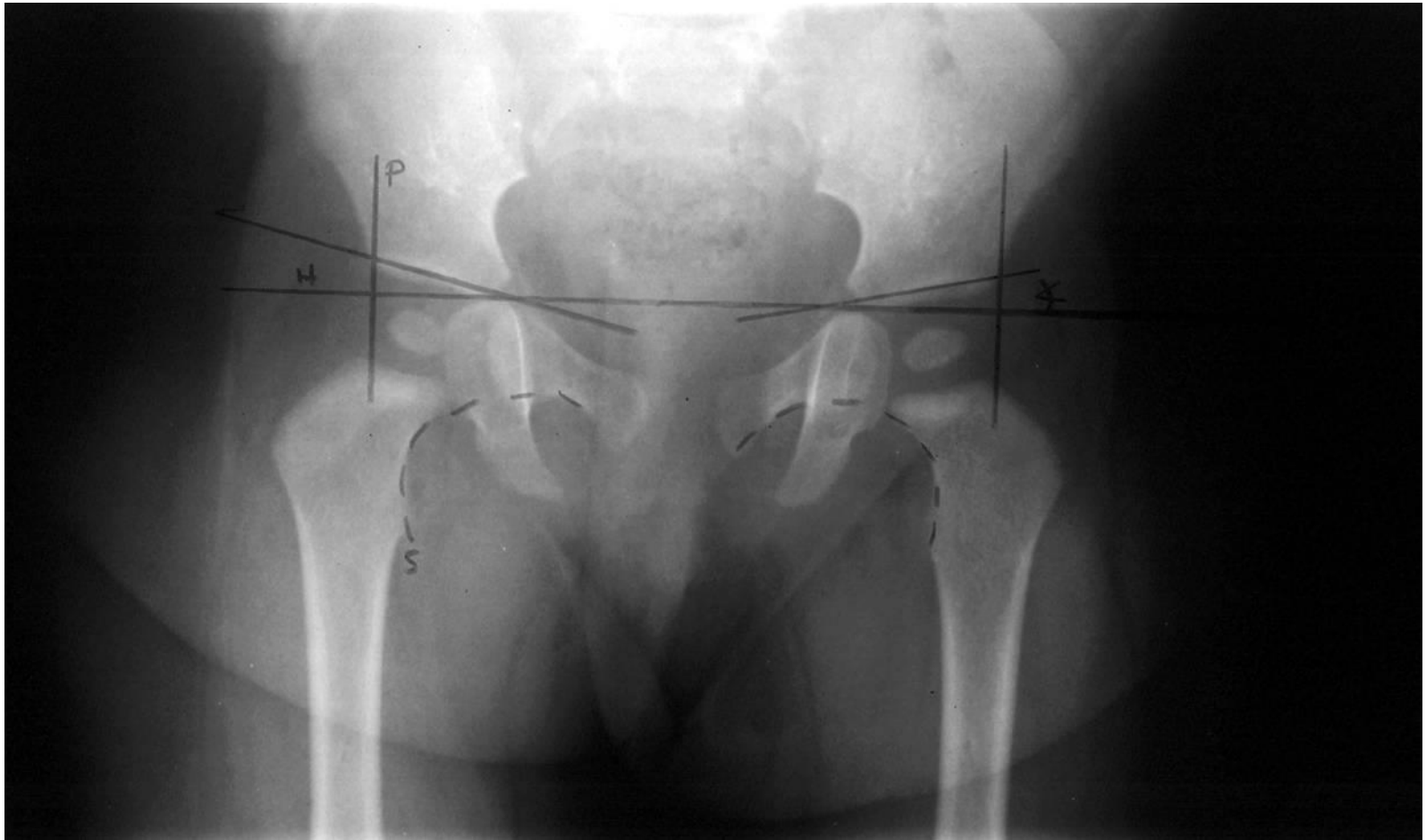
Describe displacement in ap and
lateral view

ap :translation& shortening
lateral: angulation



Lines ?

Hilgenreiner , perkins , shenton



Sever disease



bilateral Slipped capital epiphysis



sho had el disease ?
Cohler disease
“navicular bone osteocondritis”



Sho had ?
Right side ddh



Coxa valga



Sho had ?

Osteochondritis “discans”



Coxa vara



What is this congenital talipes
equinovarus
TTT conservative (Ponseti) serial
casting
describe the disorder
plantar flexion supination medial
rotation except body of talus



Pes planus valgus



Genu vara



Congenital convex pes vulgaris ?



Right acetabular dysplasia



Osgood schilter disease



Imp : perthe's disease
mt2akel el ras



Hallucis valgus



- Sho hada el fracture ? Medial e fracture
- Sho el cause ? Avulsion of the
- flexors





- What is this fracture ? Barton fracture

- Scaphoid fracture
- Comp.? Avn



- Disi



- Dorsal intercalated segmental instability
- El msafe ben scaphoid w lunate 2kthr mn 3 mm due to schapolunte fislocation
- ?

1



2



- Sho 1 ? Comminuted fracture of the base of the first phalanges “rolando”
- Sho 2? Bennets fracture

- Sho esmo el fracture had ?
- Mallet fracture
- Extensor avulsion





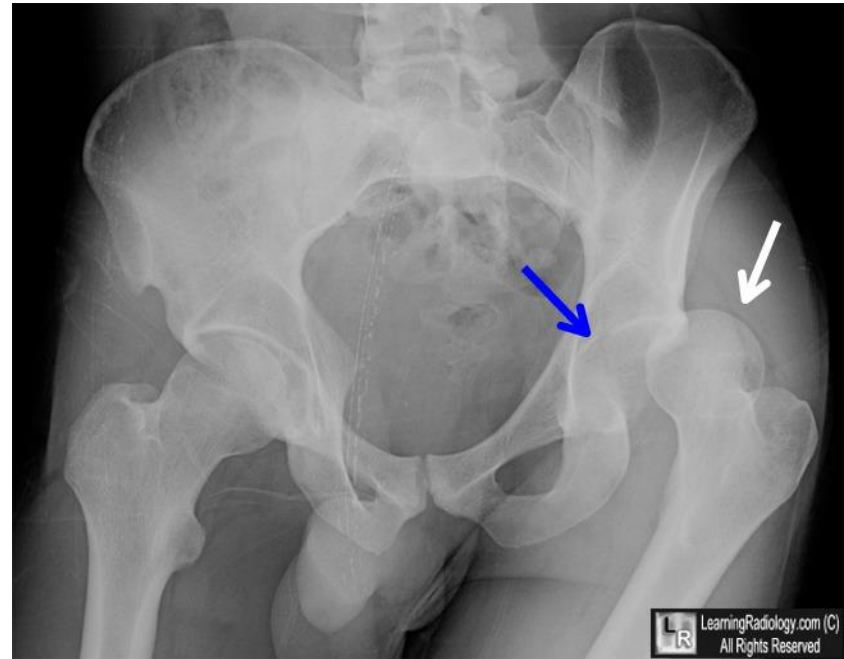
- Sho had ? Open book injury
- Comp. ? Bleeding , soft tissue injury

- Lateral compression



- Compined fracture





- Left Femoral head dislocation
- posteriorly



- Sho had ? Femoral neck fracture
- TTT ? ORIF
- Comp ? Non union AVN



- ?
- Right inter trochantric fracture
- most common comp. ? Mal union
- Failure of fixation



- Supracondylar fracture
- el displacment ? Translation angulation

(radial clup hand)



1



2



- Sho 1 ? RA
- 2 ? OA

imp



- Sho had ? Cubitus valgus
- Cause ? Non union of lateral condyle
- Most common comp.? Ulnar nerve



(a)



(b)



A salter 2
B salter 4
E salter 3
B salter 4



(e)



(f)

- Keibock's disease
- Lunate density





- Avulsion of the fifth metatarsis bone

- Sho ? cupitus varus
- Cause ?
- Malunion of supracondyle





- Sho had el disorder ? Madelung's Disease



- Calcaneous fracture

- avn



Talus fracture

- Protrusion acetabuli
- bilateral



- Bimalleolar fracture



1



2



- 1 : springle shoulder
- Klippel feil



- Tibial platua fracture

- Lateral
- patellar
- dislocation





- Rheumatoid arthritis

- What is this ?



- Medial winging of the scapula
- Cause ? Long thoracic nerve injury

1

2



**X-rays of two knees illustrating
(left) rheumatoid arthritis and
(right) degenerative osteoarthritis**

- Sho 1 ?RA
- 2 ? OA

Medial epicondyle fracture
Avulsion of flexor



Left DDH



Kienbocks



Anterior shoulder dislocation



Alla 23Im

فشكلاها flat foot

“pes planovalgus”



Anterior dislocation of the shoulder



Medial epichondyl e fracture



Acetabular dysplasia



Duputrins
???



- Done By Shaker AL-AZAB
:D
- Supervised by >.< dr hadel abu el rub



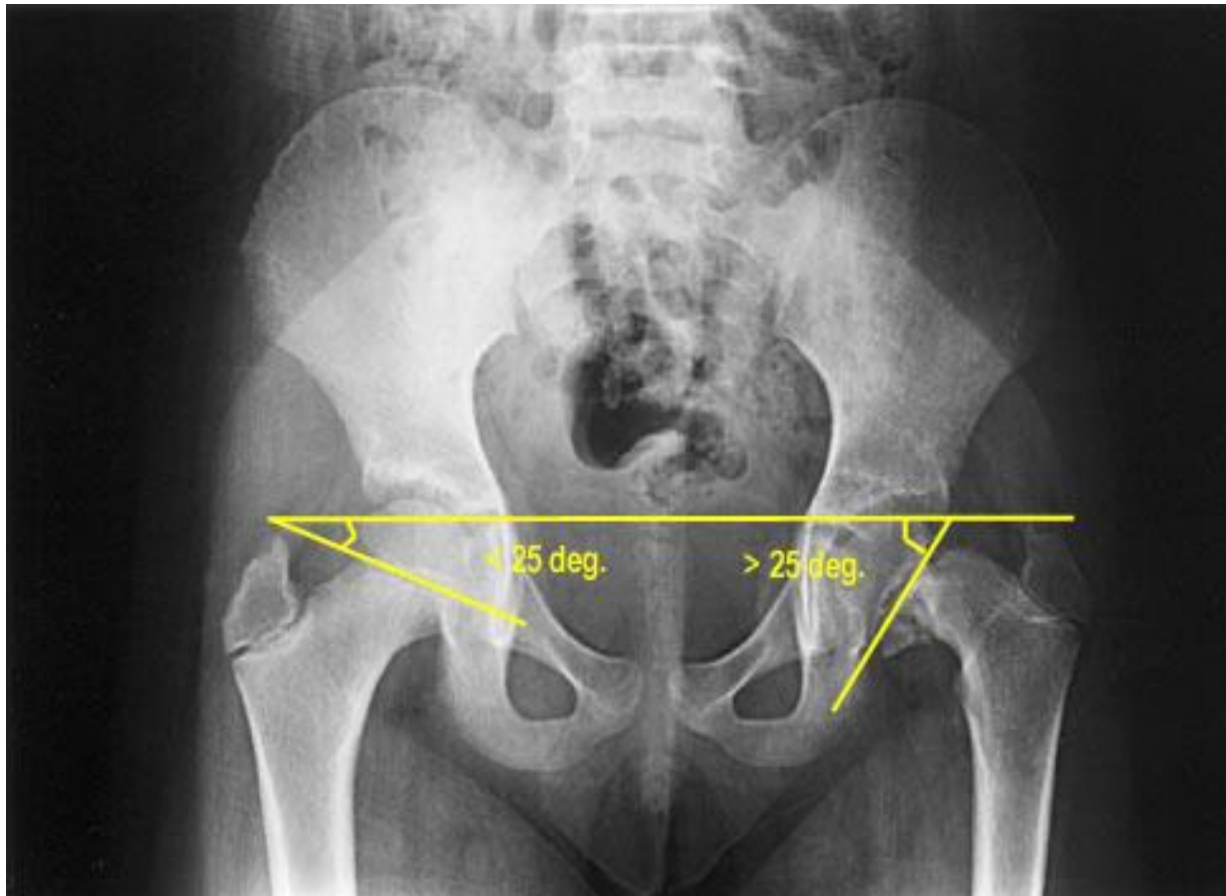




RED DOT

18





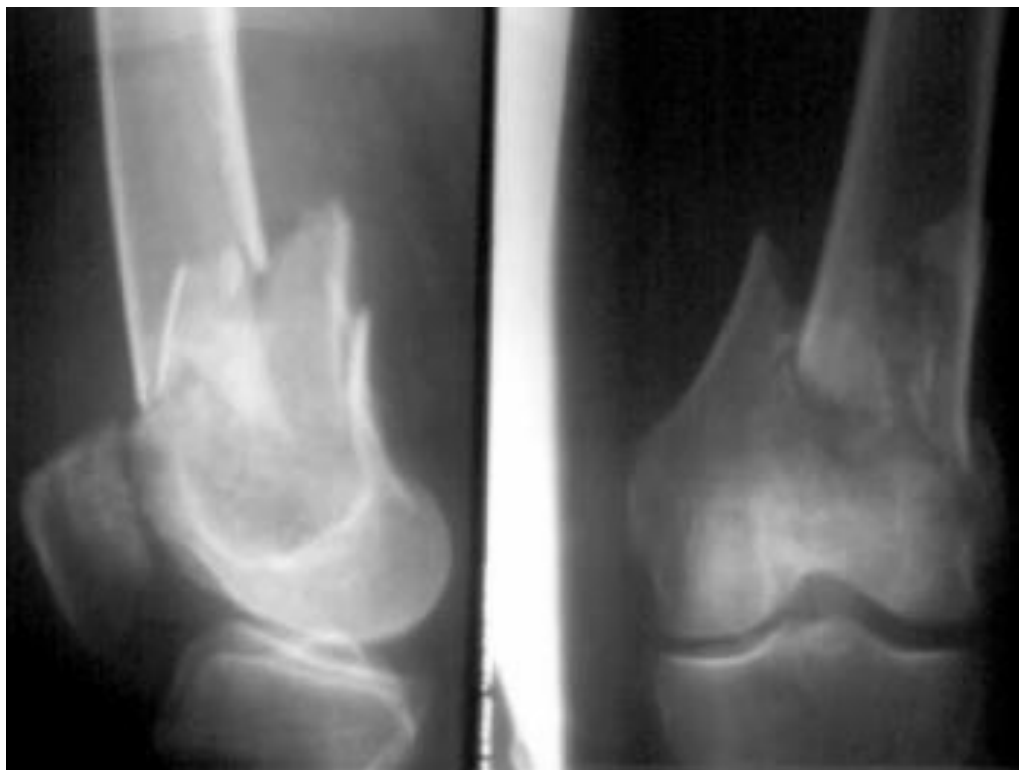


In an infant: the left hip is distended and the head is drifting out of the socket.



Six months later the epiphysis appears to be **necrotic**.



















26.19 Fractured lateral co











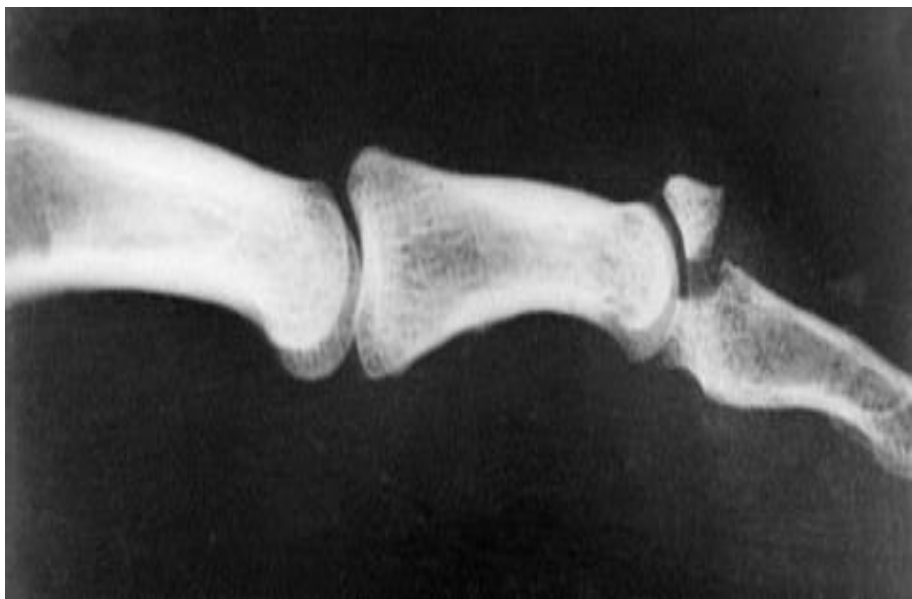




















©Behrang Amini, MD/PhD







Normal



Congenital clubfoot



